



TOTAL BODY BED

Multifunctional bed with 4 motors for face and body treatments, massages, manicure, pedicure, reflexology and built-in head wash unit.

Electrical height, backrest and knee rest adjustment.

Metal frame. Mattress covered in oil- and fire-resistant PVC.

Removable arm rests. External headrest included.

Tank with Pipe-free jacuzzi system, shower head and chromotherapy. Floor drainage



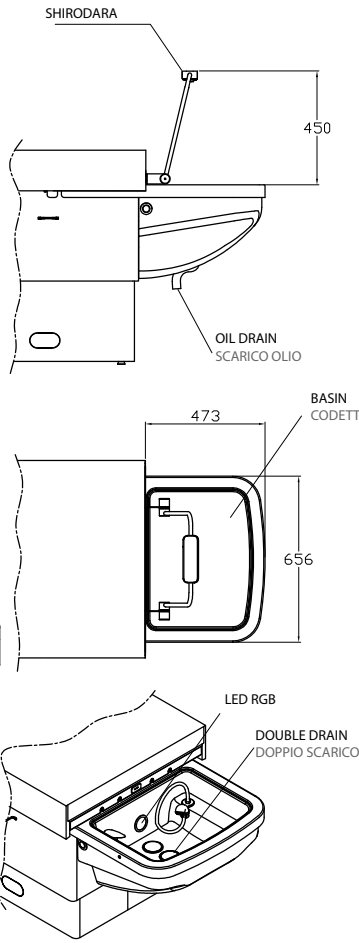
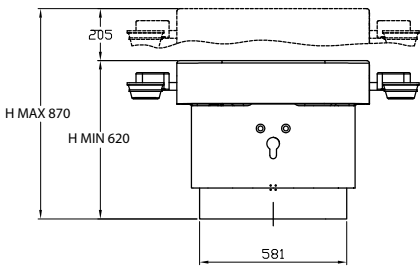
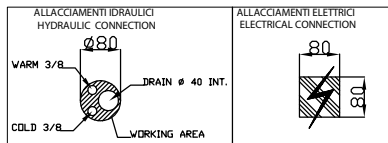
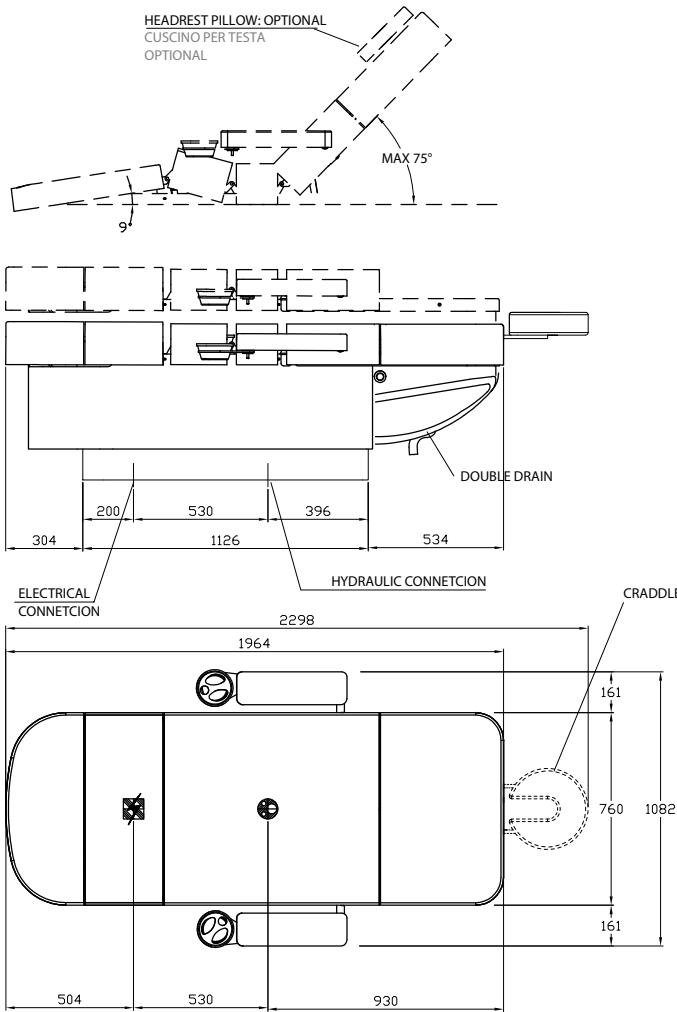
Multifunctional bed with a pedicure basin equipped with hand shower, PIPE-FREE system hydromassage and RGB-Led light and a hair wash basin included. Floor or Wall drainage. Height, backrest and legrest electrically adjustable. Painted metal frame. Mattress covered in soft PVC, fireproof and oil resistant. Removable armrests. External headrest included.



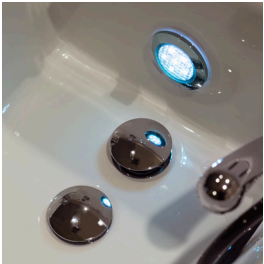
Skay and Woods



Patents and
Certifications



TILTING NECKREST



CHROMOTHERAPY
DOUBLE DRAIN



RECYCLE



SHIRODARA ARCH



DREAM FLOW ARCH



SINK EXTENDER

TECHNICAL SPECIFICATION

BED TYPE	4 MOTORS	
THERMIC COVER INSPECTION	*	
CAVE LENGHT	//	
UPHOLSTERY	SKAY PVC NILO - SEAT BACKREST HEADREST PILLOW	
ELEVATION RANGE	↑ 62/87	

VERSION	SI	NO
MANUAL		*
ELECTRIC	*	

ELECTRIC	
VOLT	110/240V 50-60HZ
ABSORPTION	400 W/500 W THERMIC
SOCKET	SCHUKO/UK/USA

OPTIONAL	AVAILABLE	NOT AVAILABLE
THERMIC	*	
DOUBLE DRAIN	INCLUDED	
CHROMOTHERAPY	INCLUDED	
DEDICATED TILTING NECKREST	INCLUDED	
FACIAL HOLE AND REMOVABLE PILLOW		*
HEADREST PILLOW	*	
CRADLE	*	
SHIRODARA ARCH	*	
DREAM FLOW ARCH	*	
SINK EXTENDER	INCLUDED	
IGLOO & MUSIC	*	
RECYCLE	*	
MEMORY FOAM		*
PAPER HOLDER		*
KNEE ROLL	*	
TERRY COVER		*
FOOT CONTROL	*	
KIT LED		*
LAMP HOLDER		*
SHIRODHARA AYURVEDA	*	
REMOVABLE ARMRESTS	*	

MEASUREMENTS	
MAXIMUM LOAD CAPACITY	200 KG
MEASUREMENTS	→ 196/230 ↖ 76/108(WITH ARMRESTS) ↑ 62/87- CM 145 KG
PACKAGING	PALLET → 220 ↖ 92 ↑ 100 - 185 KG

NILO S.r.l.

Via Armani,1/A

42019 Scandiano (RE) - Italy

Mod : TOTAL BODY - N9025

Multifunctional Bed

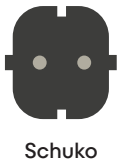
Made In Italy

110 - 240 V

50 - 60 Hz

400 - 500 W

CE



Schuko



U.K.



U.S.A.